

# TIME TO BREAK OUT.



CATALOGUE

2021|2022

**KARMANN**





# CUSTOMIZED OR AS-IS, HOW EVER YOU WANT IT?

Campervans are freedom, an everyday vehicle and a retreat all in one. It is therefore all the more important to find the right one.

Find out which Karmann-Mobil campervan you want to discover the world in and which bed you want to dream about it in.

Our vehicles offer holiday fun in all sizes. In various lengths. And in countless variations. This rather factual presentation provides an initial overview. The emotional side is yet to come. Just turn the page.

## MODELS WITH A POP-UP ROOF

**NEW!**  
MINIVAN WITH  
A POP-UP ROOF



### DUNCAN

Minivans with a pop-up roof for any time and place.



495



535



Vehicle length

5 m

up to 5.50 m

## MODELS WITH DOUBLE BEDS

### DAVIS

Defining new trends in campervans.



540



All Davis Lifestyle versions are optionally available with a pop-up roof and additional double bed.

Vehicle length

5 m

up to 5.50 m

## MODELS WITH DOUBLE BEDS

### DEXTER

Charisma and comfort combined.



540



580



Vehicle length

5 m



DEXTER-MODELS  
WITH ALL-WHEEL  
DRIVE

Safely gain ground.

4x4  
AN ALL-WHEEL DRIVE  
COMFORT VAN

560 4x4



570 4x4



Vehicle length

5 m

up to 6 m

## MODELS WITH DOUBLE BEDS

TRENDSTYLE  
LIFESTYLE

590

TRENDSTYLE  
LIFESTYLE

591



LIFESTYLE

592



LIFESTYLE

630



up to 6 m

## MODELS WITH SINGLE BEDS



LIFESTYLE

600

TRENDSTYLE  
LIFESTYLE

620



up to 6.50 m

## MODELS WITH LIFT BED

DEXTER-MODELS  
WITH LIFT BEDThe short snappy  
comfort van  
with a bed upstairs.

550

This **Dexter** model feature an electrically  
controlled lift bed for 2 people above the  
seating group.

Vehicle length

5 m

up to 6 m

## MODELS WITH SINGLE BEDS



600



625



up to 6.50 m



# DAILY ROUTINE OR ADVENTURE? WHY NOT BOTH?

The new Duncan is an everyday van for all occasions. Ultra-compact and fascinatingly flexible, it is ready to take on all tasks including spontaneous tours.

With ultra-compact dimensions and automotive equipment including many safety and connectivity features, this multi-functional everyday vehicle handles well in city traffic.

At the same time, its flexible interior offers plenty of space for leisure activities and active holidays. For example, the three-seater bench seat can be moved, removed or folded down in no time at all — depending on whether you need more space for luggage or additional room to relax. The spontaneous type, Duncan. Perfect for spontaneous types.

**NEW!**  
MINIVAN WITH  
A POP-UP ROOF



### DUNCAN

The jeans type:  
the perfect match  
for everyday life  
and leisure time.

From page 08/09







**NEW!**  
TRENDSTYLE  
SPECIAL EDITION



# INDIVIDUAL AND ALL-INCLUSIVE?



## DAVIS TRENDSTYLE

Stands out from the crowd with its innovative self-reliant interior.

From page 26/27

**The new Davis Trendstyle is designed to meet extraordinary standards. The brand new interior design is exceptional through and through.**

It has an impressive textile microfibre look that is unparalleled in the camper sector. Another refreshing highlight yet to be seen is its upholstery in stylish coffee/cappuccino colours, which rounds off the harmonious overall look of its spacious interior.

The same applies to the exterior. Style everywhere you look. From the new trendy Lanzarote colour to the black aluminium wheels and the tinted windows. And this is all standard, by the way, just like the rest of the great features throughout. Typical Karmann-Mobil.





# WHAT KIND OF VACATION WOULD YOU LIKE?

With your Karmann-Mobil, you can take a new direction every day. But which model fits best?

## DEXTER

Charismatic camper vans for short trips and long journeys.

From page 30/31



**NOW!**

WITH A SUNROOF  
AND LITHIUM-ION  
BATTERY

## DEXTER WITH LIFT BED

Plenty of room, even upstairs.

From page 52/53



## DAVIS LIFESTYLE

Stylish camper vans from elegant to luxurious.

From page 44/45

**NEW!**

DAVIS LIFESTYLE  
WITH A NEW  
INTERIOR



**DEXTER 4x4**

All-wheel drive outside,  
all-inclusive inside.

From page 16/17

# BEAUTIFUL COMES IN MANY COLOURS.

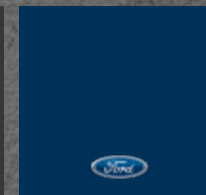
**You alone decide where the journey leads.  
Of course this also applies to the furnishings.**

Would you like a motorhome that suits your taste in every detail? We can arrange for that. Take a moment and let your individual preferences lead the way.

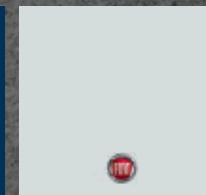
There are numerous options and an infinite array of combinations to choose from. The result is individual and, above all, just the way you like it.

**PAINT FINISHES**

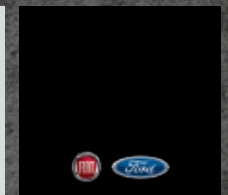
LANZAROTE GREY



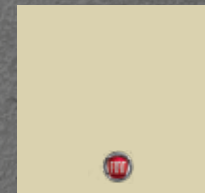
CHROME BLUE



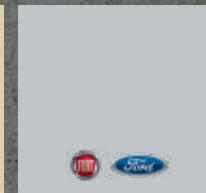
EXPEDITION GREY



BLACK



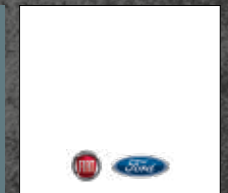
CHAMPAGNE



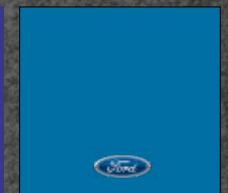
SILVER



IRON GREY



WHITE

RACE RED  
(DUNCAN ONLY)ORANGE GLOW  
(DUNCAN ONLY)ABYSS BLUE  
(DUNCAN ONLY)AZUR BLUE  
(DUNCAN ONLY)



# FLEXIBLE UP TO THE ROOF. AND BEYOND.

**The new Duncan – always ready to go, always on the move. Whether during daily life or on holiday: This ultra-compact multifunctional motorhome is ready for any destination.**

A quick trip to the building centre? Taking young footballers to an away game? Or driving to a meeting with a mobile mini-office? The new **Duncan** gives you all the freedom you need. Whether for leisure, family or work: make every day an expedition. Especially since the **Duncan** is a real travel pro.

With its comfort furnishings and superior engine, it not only handles any everyday task dynamically, but is also the ideal companion for a short week-end trip or a long-planned outdoor holiday.

---

*The new Duncan – a buddy and a travel companion with optimal everyday characteristics.*











A full load of recreation.  
Whether in the city  
or the country.



# PACKED WITH LEISURE.

Whatever you have in mind, wherever you want to go — there is always something to transport. It's a good thing the **Duncan** is so practical and nimble.

It doesn't have to be a big trip. The **Duncan** also feels right at home on a shopping trip in the city. A piece of furniture? A couple of cases of drinks? The week's groceries? No problem, the **Duncan** can take it all. Leisure and sports equipment are also in good hands here.

And by the way, it also looks stylish. Add automotive specifications with a host of safety and connectivity features that are every bit as good as those in an upmarket passenger car. The **Duncan** is a multifunctional everyday vehicle with lifestyle character. Just the right thing for active leisure time.





Everything needed  
for recreation.



DUNCAN

10/11



## MINIVANS WITH A POP-UP ROOF



Enjoy your meal.  
The kitchen invites you to cook.



# IN THE SPUR OF THE MOMENT.

It can be anything but boring. With ultra-compact dimensions and variable interior space, the Duncan is equally suited to city driving and adventure touring.

4.98 m or 5.34 m long and 2.08 m wide: with the **Duncan**, you can easily navigate city traffic. It even makes it easy for you to find a parking space. With a height of just 2.08 m, you can find space in some modern multi-storey car parks.

Back in nature, you can unfold the extremely flat pop-up roof with gas shock absorber support and make yourself comfortable on a double bed with spring plates under the mattress.

Good night, mosquitoes!  
Effectively protected by  
mosquito screen openings.



Bedded on spring plates. For total  
sleeping comfort on the road.



That's a lot of features.  
And still so much room for fun.



## MINIVANS WITH A POP-UP ROOF



Versatility is its middle name.  
A room with a view.



Two rooms with a kitchen and bathroom.  
How much rent would that cost anywhere else!



# ALL IN, ALL ON, ALL GOOD.

Sleep, cook, relax? Everything can be arranged. In the living area, you do not have to do without any comfort. It's nice to be far away, but still at home.

Compact on the outside, spacious on the inside. The **Duncan** provides a surprisingly clever use of space and a variable interior. For example, the three-seater bench can be moved or removed in just a few easy steps. Do you need another surface to relax on? Just fold it out. A kitchen with a cooker, sink, fridge, storage cupboards – everything is there. A table to mount or set up in front of the vehicle is hidden in the side door. When are you leaving? The **Duncan** is as ready and as flexible as you are.

### Special highlights:

- ⊗ A high-quality yet robust interior
- ⊗ Modular three-seater bench on sliding rails
- ⊗ Pop-up roof with air-suspension
- ⊗ 4.98 m long, 2.08 m wide, 2.08 m high
- ⊗ Dynamic handling with up to 170 HP
- ⊗ Extensive safety and assistance systems
- ⊗ Kitchen and refrigerator on board, and even a toilet in the Duncan 535







ALL-WHEEL DRIVE MODELS



# ICELANDIC IMPRESSIONS

## ON THE ROAD BETWEEN FIRE AND ICE.

**Glaciers and volcanoes, waterfalls and geysers, northern lights and the midnight sun – Iceland is a constant source of fascination with its breathtaking natural phenomena.**

An all-wheel drive campervan is the perfect way to experience the spectacular landscape close to the Arctic Circle individually and up close. Hop in, have a look at these impressions, and take a little holiday in your mind. Karmann-Mobil offers pure caravanning freedom for nature lovers and active holidaymakers alike.

Wherever your next trip takes you: Our motorhomes are waiting for you.

**Dyrhólaey in southern Iceland.** View from a distance of Hálsanefshellir Cave, a grotto formed of natural basalt rock columns.

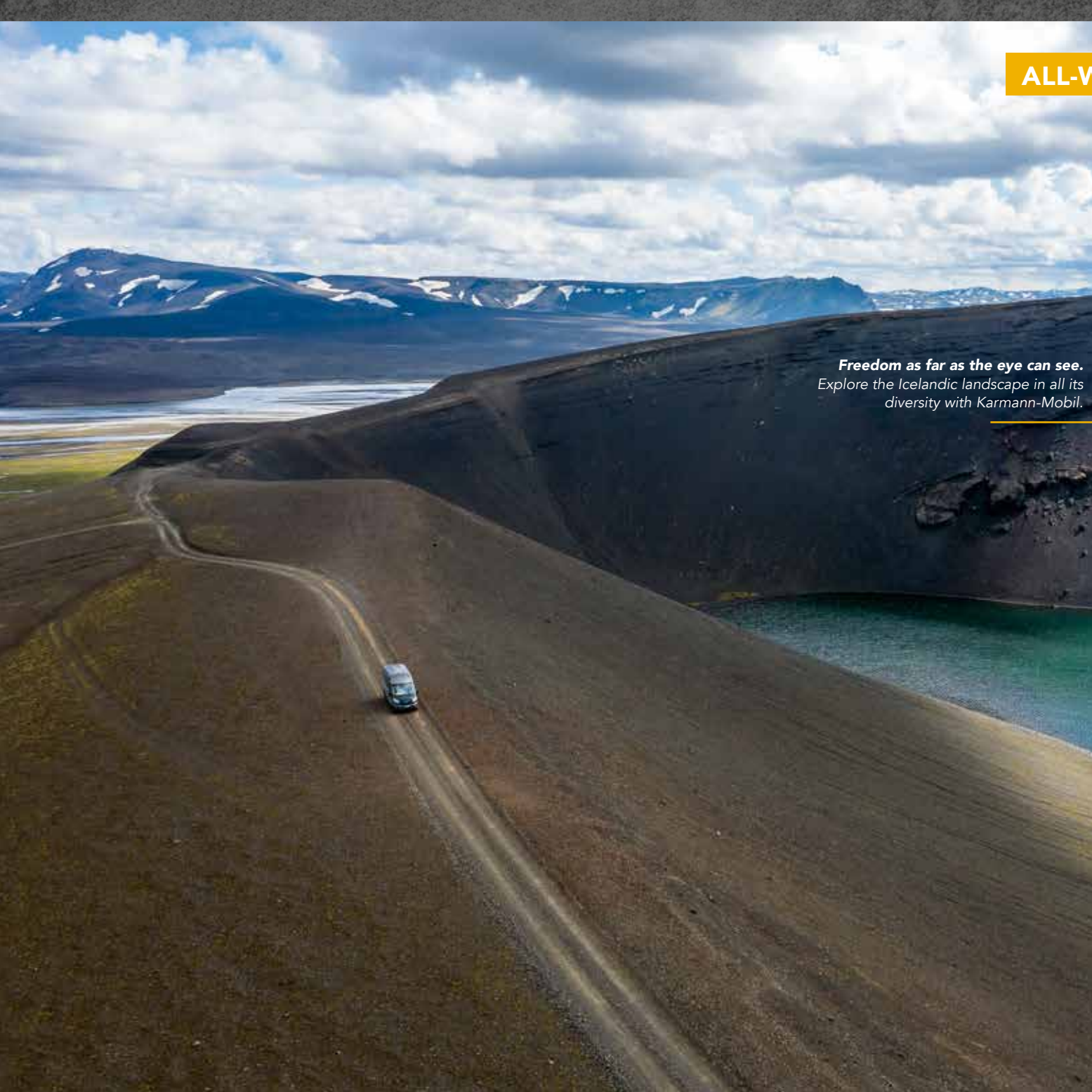


**Near Landmannalaugar.** Just few kilometres to the northeast, you will discover a natural crater-shaped lake.





**Freedom as far as the eye can see.**  
Explore the Icelandic landscape in all its  
diversity with Karmann-Mobil.





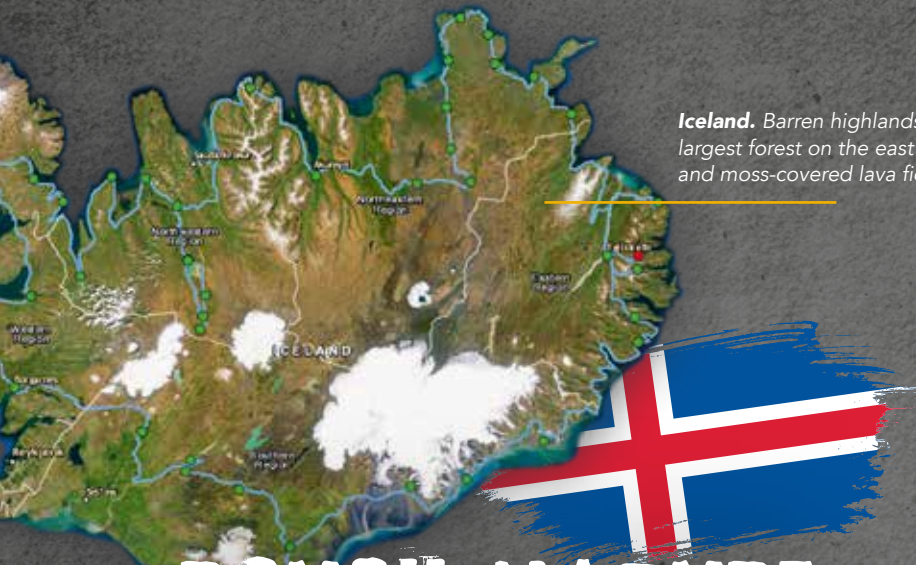
ALL-WHEEL DRIVE MODELS

# ICELANDIC IMPRESSIONS



**West Iceland.** Shipwreck of the Gardar BA 64, which was built in 1912 and, until the mid 60's, the first steel fishing boat to be able to break ice.





**Iceland.** Barren highlands in the interior, the country's largest forest on the east coast, deep fjords in the northwest and moss-covered lava fields in the southwest.

# ROUGH NATURE, FASCINATING CONTRASTS.

A red cross with a white border on a blue background – the colours of the Icelandic flag have a deeper meaning and symbolise the defining elements of the island.

Red stands for volcanic fire, white for ice and blue for the sky. Follow the Icelandic flag on your mental journey! Numerous lava caves and hot springs invite you to explore. The high level of volcanic activity is yet another reason for Iceland's attraction: geysers.

Boiling hot water emerges from the ground and bubbles up into the air — a fascinating natural spectacle. And once again our gaze wanders to the horizon. Infinite expanses yet to be discovered.

**Iceland's southern Highlands.**  
Along a riverbed of meltwater, driving towards Landmannalaugar.



ALL-WHEEL DRIVE MODELS

18/19



**Stokkur.** Geyser area in Iceland's southwestern inland.  
An impressive fountain rises into the air every few minutes.





## ALL-WHEEL DRIVE MODELS





# FIXED ITINERARIES? WE WOULD RATHER FIND OUR OWN WAY.

The plan for your tour? Not having the plan. Just take off, follow your curiosity and take in new impressions.

Why should you commit to just one place when there are so many beautiful places? Why decide months in advance where you want to be months later? And why be guided by travel brochures

when your own longing is clearly better advisor? Well, why actually? The world has so much to offer – time to take a discovery tour.

## 4x4 ALL-WHEEL DRIVE ▷



# LIMITS? WHAT'S THAT?

The real adventure begins where the roads turn into paths.

The rocky routes often lead to the most wonderful places. Sometimes they are not even asphalted and in bad weather often hardly accessible with an ordinary motorhome. A simple task for the **Dexter 560 4x4** and the **Dexter 570 4x4**. With its indestructible all-wheel drive, it guides you safely through difficult terrain and opens up many new ways to enjoy your holiday. Thanks to a towing capacity of up to 2.8 tonnes, you can also take heavier sports trailers with you on your journey.

The furnishings are correspondingly lavish. With a fully equipped kitchen, washroom with a shower and a toilet, comfortable single beds, a modular seating area and a metre-long storage space in the rear, it's easy to feel comfortable in the **Dexter 570 4x4**. Even if it's bitterly cold outside. Thanks to efficient insulation and a powerful heating system, your motorhome will remain cosy all year round. You don't even have to be on holiday. The **Dexter 570 4x4** is also fun to use every day due to its compact dimensions and features.

*Elegant shell, striking core –  
the allroad Dexter from the inside.*







All-wheel drive  
outside, all-inclusive  
inside. That's just  
how Dexter rolls.





## ALL-WHEEL DRIVE MODELS





# UNIQUE LIKE YOUR HOLIDAY.

Fully responsive on gravel, snow or ice, alert on the road, wonderfully idiosyncratic in its features – the Dexter 560 4x4 is full of talent.

All-wheel drive, slippery, gravel. Do you associate these words with comfort and upscale features? Probably not, but you could. After all, the **Dexter 560 4x4** combines the best of both worlds in the most individual way.

At just under 6 metres in length, you can expect a comfortable seating area for four, a large refrigerator with access from the outside and inside, a toilet with a shower and loads of other comforts. With this equipment and all-wheel drive, you can go anywhere comfortably. At any time of the year. Thanks to efficient insulation and powerful diesel heating, the Dexter 560 4x4 is also an ideal base camp in winter. Before you continue your journey far from the beaten path.

## Special highlights:

- ⊗ EcoBlue engines up to 170 HP
- ⊗ Strong all-wheel drive
- ⊗ Powerful Combi 6 diesel heater
- ⊗ Versatile storage options
- ⊗ Attractive price-performance ratio
- ⊗ Trailer load of up to 2.8 tonnes
- ⊗ Refrigerator in the entrance area

Superior on the inside, too.  
Everything is in its place here.



The interior. Beautiful and  
practical at once.



**NEW!**  
TRENDSTYLE  
SPECIAL EDITION

# THE STUFF HOLIDAY DREAMS ARE MADE OF.



The new Trendstyle special edition has more than earned its name. A real eye-catcher through and through. And far more than just that.

Do you just want to enjoy the beautiful view? You don't even have to look out the window for that. The modern interior design is a real feast for the eyes. In view of the enormous amount of space available, we could even speak of a buffet for the eyes. Either way, the **new Trendstyle special edition** offers plenty of room for stylish living. A special highlight is the textile microfibre look of the furniture surfaces. Very unusual for a camper, very stylish and yet extremely practical and robust. The **Trendstyle special edition** is available for **Davis 540, 590, 591 and 620.**

## Attractive high quality furnishings

- ⊗ 140 HP FIAT engine, 160 HP option
- ⊗ Isofix
- ⊗ 90 litre fuel tank
- ⊗ Cab seats with armrests
- ⊗ Awning
- ⊗ Multimedia-ready
- ⊗ Table extension
- ⊗ Mosquito screen door
- ⊗ Electric step
- ⊗ 35 L chassis
- ⊗ 16" black alloy rims
- ⊗ Combi D4 heater
- ⊗ Lanzarote Grey finish
- ⊗ Shading system
- ⊗ Midi Heki
- ⊗ DAB
- ⊗ Cab seat covers
- ⊗ Electric exterior mirror
- ⊗ Outdoor lighting



The highest level of comfort merges seamlessly with special style here. And vice versa.



What a bundle of features! And all this at a price that makes this model even more attractive. If that's even possible.







## MODELS WITH DOUBLE BEDS



D540



# RELAXATION AT NIGHT, EXCITEMENT IN THE MORNING.

**That's the beauty of camping:  
The choice is yours!**

You can sleep where you want and even decide how you want to sleep. What will it be for you? What should your night camp look like? Would you like to enjoy lots of space and closeness at the same time? Then we recommend a spacious double bed. This allows you to practically take your bedroom with you on your journeys.

In many of our motorhomes, a folding double bed with a huge storage space is part of the standard equipment. We will be glad to present you the various models and advise you – we don't want the choice to cause you sleepless nights.



## MODELS WITH DOUBLE BEDS

# WONDERFUL NATURE OUTSIDE. INSIDE TOO!

There are motorhomes. And then there are motorhomes that change your whole life. Like the Dexter.

Your holiday will never be the same with it, because it lets you experience nature in a completely new way. And, by the way, this starts even before you leave. After all, the compact **Dexter 540** boasts a modern interior with a lot of real wood. A robust walnut look and light grey surfaces create a lot of striking charm in combination. You can feel this on every centimetre and see it in every detail. The kitchen unit, for example, is wonderfully robust and yet shines with fine chrome fittings. The dreamlike double bed should also be to your liking. It is positioned perpendicular to the direction of travel for extra space and comfort on the road. You can enjoy all this year-round – the robust Dexter is prepared for any weather with its efficient insulation and high-performance heater. How about skiing in the Pyrenees?

### Special highlights:

- ⊗ High-quality furnishings with solid wood elements
- ⊗ Folding double bed
- ⊗ Spacious washroom with swivelling washbasin
- ⊗ Large refrigerator and high-quality kitchen unit
- ⊗ Seating group with 4 seatbelts
- ⊗ Bunk beds for Dexter 560 and 581
- ⊗ Sliding roof
- ⊗ Skyroof (optional)
- ⊗ More self-sufficiency with a lithium-ion battery

Practical and robust  
are always trendy.



Everything included.  
Just not everyday life.







**DEXTER 540**

30/31

*Fresh impressions.  
Heavenly, this sunroof.*





## MODELS WITH DOUBLE BEDS





# WITH THE GREATEST PLEASURE.

Can a motorhome be too big? No, and that's why the Dexter 580 with its enormous amount of space is just right. At just under 6 metres, it offers every conceivable comfort. And plenty of room to spread out.

At any time of the day or night, the **Dexter 580** proves to be a dreamy acquisition. Starting with the comfortable double bed and the great sunroof that lets the morning sun in, to the spacious washroom with its swivelling toilet, everything is in the right place here.

And by everything, we mean much more. For example, a panoramic window that provides plenty of light, a high-quality, chrome-trimmed kitchen unit and a 142-litre refrigerator that can cater to a crew of up to four. Would you like to accommodate a group of five?

Bedroom on tour.  
Dreamlike, this rear bed.



Spacious bathroom.  
With a shower and  
swing-out WC.

Attractive cooking features.  
And high-quality stainless steel.





## MODELS WITH DOUBLE BEDS





# AN EYECATCHER ON THE GO.

**Of course, a motorhome should above all be reliable, safe and practical. But why shouldn't it also look extremely stylish?**

If you look at the new Davis, it is hard to imagine anything other than a beautiful holiday. With its bright interior, high-gloss surfaces and a multitude of elegant furnishing details, the motorhome is a work of art in its own right. But also extremely practical.

In the larger **Davis models 590, 591 and 592**, you can enjoy all these advantages in abundance. And in excess length. About 50 cm more means so much more spaciousness in the large Davis. And you can feel this everywhere: in the spacious windowed bathroom, in the long kitchenette, in the spacious lounge and also at night, when you can spread out wonderfully in your wide double bed.

In the **Davis 591** you also save space when sleeping. A charming bunk bed makes this possible. Also highly noteworthy: the refrigerator in the **Davis 592**, which is almost epic in size at a full 142 litres. So there will certainly be no shortage of cool drinks and fresh food. A Davis of your choice will take care of the rest.

## Special highlights:

- ⊗ Engine up to 180 HP
- ⊗ Elegant interior design
- ⊗ High-quality furniture
- ⊗ Atmospheric LED lighting
- ⊗ Powerful diesel heater
- ⊗ Superior bathroom comfort
- ⊗ Lots of space and storage
- ⊗ Folding rear bed

*Splendidly furnished.  
Your motorhome from the inside.*





## MODELS WITH DOUBLE BEDS





# NICE PLACE YOU HAVE HERE!

**You can never have enough space or enough comfort and nobody has ever complained about having too much style.**

After all, the compact **Davis 540** not only provides room for impressive design, but for everything else as well. A bathroom with a shower, a modern kitchen finish, a wide dinette window, a generous double bed, high-quality furnishings, plenty of storage space and yet it still feels spacious. Even in the cab, which offers a remarkable amount of headroom. The best visibility is provided anyway, but not for others looking in.

This is due to the new, optional front darkening feature, which provides more privacy and less sunlight. Speaking of the weather, all Davis models can be used all year round thanks to their elaborate insulation and winterproof diesel heating.



*A little space miracle –  
the Davis creates space  
where there is none.*



## MODELS WITH DOUBLE BEDS

**NEW!**

DAVIS LIFESTYLE  
WITH A NEW  
INTERIOR



# IT CAN'T BE OUTDONE? OH, YES IT CAN!

If you like the new Davis, you'll like this even more. After all, this elegant motorhome can be furnished with even more stylish and luxurious features. This surprised us, too.

The **Davis lifestyle** features really take it up a notch in terms of elegance, space and comfort. With an interior that is second to none. A white kitchen unit, the additional ambient lighting, fine chrome applications, indirect LED lighting – style fills the whole room and is embellished with cleverly integrated storage compartments. It really doesn't get any better than this – but sunnier. You can enjoy an unobstructed view of the sky with the optional Skyroof. Sun during the day, stars at night and lots of natural lighting inside at all times for an entirely new sense of space. Do you feel like having a lot of free space while enjoying a holiday on the sunny side?

### Special highlights:

- ⊗ Kitchen unit with white mineral worktop
- ⊗ Ambient lighting on the wall unit and kitchenette
- ⊗ Rear doors with monochrome interior trim
- ⊗ Decorative strips in chrome look on the wall unit
- ⊗ Additional storage cupboards above the rear door



Shiny fittings. It is worth paying attention to the details here.









## MODELS WITH DOUBLE BEDS



*Is style extremely important to you?  
If so, you've found your match.*



# PLENTY OF ROOM FOR BIG PLANS.

**Most of the time something is either practical or beautiful.  
The new Davis 630 is both, and by no small measures.**

Nothing is cramped in this camper van. The new **Davis 630** has a lot of space and you can feel it in every centimetre. A pleasant feeling of spaciousness helps you enjoy every journey, a large kitchen unit literally invites you to cook and the washroom with a sliding sink can almost be called a bathroom. It's not surprising that a lot of space is also provided for sleeping comfort. A whole lot!

The comfortable, electrically height-adjustable rear bed makes every night a restful night. Thanks to its huge surface, you can decide every evening anew whether you want to sleep crosswise or lengthwise. At 1.800 litres, the variable loading space so huge that you can take half of your inventory with you. Thanks to the special cargo compartment floor, even heavy things are easy to transport in your mobile home. You can therefore take everything you need for a wonderful holiday. Enjoy it.

## Special highlights:

- ⊗ Variable giant storage space in the rear
- ⊗ Electrically height-adjustable rear bed
- ⊗ Cargo compartment floor with loading ramp and lashing eyes
- ⊗ Large rear bed for sleeping lengthwise or crosswise
- ⊗ 1,800 litre cargo compartment
- ⊗ Large kitchen unit
- ⊗ Washroom with movable wash basin

*Comfortable.  
Bedroom with lots of storage space.*



*Nice and big.  
Space in abundance.*





## MODELS WITH SINGLE BEDS



# INTO NATURE, INTO ENJOYMENT!

Such a motorhome looks good in the showroom – but its preferred living space is, of course, outdoors. Where the holiday feeling sets in, adventure awaits and freedom is part of the itinerary.

You can then recover from all the wonderful exertions in the comfort of your own bed. Well rested, you can proceed on the next morning. Which is highly recommended, because there are still so many beautiful places in the world.









## MODELS WITH SINGLE BEDS





# A BREATH OF FRESH AIR FOR YOUR HOLIDAY PLANNING.

Pure camping enjoyment without sacrificing comfort is what you can expect when travelling with the Davis Lifestyle with a pop-up roof. The compact campervan combines a lot of features under a single roof. And that is a real highlight in itself. Just raise it for plenty of fresh air and an unobstructed view of the sky.

You'll probably see the big constellation as well. The **Davis Lifestyle** with a pop-up roof is actually not all that big, but extremely spacious. And if even more space is needed, the vehicle can be extended by a whole floor. A huge win, especially at night. After all, the extended height also creates space for two new, wonderful sleeping berths. This extra space is provided by a pop-up roof that can be raised in just a few easy steps, thus giving you a completely new, noticeably more airy feeling of space. This is how the Davis brings a breath of fresh air to your holiday. Would you like to bet on it?

**NEW!**  
DAVIS LIFESTYLE  
WITH POP-UP ROOF



*Living on the top floor.  
An additional double bed up  
top extends the possibilities.*



*Freckles included.  
A sturdy ladder for an easy ascent.*



## MODELS WITH SINGLE BEDS



*A feast for the eyes.  
Kitchen unit with  
ambient lighting.*



*Sleek furnishings.  
Comfort bathroom  
for high standards.*



# DREAM LIKE COMFORT.

**In some places, one wishes  
that night would never fall.**

In the **Davis 600** or **Davis 620** you will look forward to it every single day. Both models have the nightly luxury of two comfortable single beds. And because almost everything is variable at Karmann-Mobil, you have the choice here too. The beds can be joined to form a cosy double bed with a single action. And the same applies during the day.

If so, then the large kitchen unit will match your taste. Would you not want to do without an appealing ambience anywhere? Thanks to the elegant furnishings, you always have it with you. Do you like it especially stylish? The Davis Lifestyle furnishings also offer plenty of style and travel pleasure.

### **Special highlights:**

- ⊗ Comfortable single beds
- ⊗ Spacious bathroom with variable floorspace
- ⊗ Folding washbasin
- ⊗ Pleasant front darkening
- ⊗ Modular storage boxes at the rear of the Davis 620
- ⊗ Combi 4 diesel heater





The Davis models are also  
very big on detail.





## MODELS WITH SINGLE BEDS

Single or double bed?  
You can still decide after  
brushing your teeth.



# CARVED FROM A DIFFERENT WOOD.

The **Dexter** has a very special character, but provides the same thing in the end: independence of the most relaxed kind.

In the Dexter models with single beds, you can enjoy individual sleeping comfort for two. Those who would like to get a good night's sleep, will feel right at home here. And those who want to experience an exciting day afterwards can have that, too.

The **Dexter 600** is almost 6 metres long and has everything you need for your personal adventure after breakfast: a great comfort bathroom, a clever folding table, a bar seating group with display cabinet, a two-burner cooker, various storage spaces, robust furniture with a lot of solid wood. All that is missing is the route.



The interior. Plenty of space  
for holiday enjoyment.









## MODELS WITH SINGLE BEDS





And that's where you come in. Would you like to travel as far as possible, take as much as possible with you or have a lot of space?

If so, then the **Dexter 625** is your motorhome. Large kitchen? 109-litre refrigerator? A more than spacious bathroom? Two single beds? Spacious wardrobe? Seating for four? More than enough storage space? It's all there in the **Dexter 625** and yet the space always a light airy feel. Perfect for long rides and big plans.

#### Special highlights:

- ⊗ Spacious design
- ⊗ Single beds can also be used as double beds
- ⊗ Comfort bathroom
- ⊗ 4 kW winter heating system
- ⊗ Bar seating (Dexter 600 only)
- ⊗ Solid high-quality kitchen unit
- ⊗ Sliding roof
- ⊗ Skyroof (optional)
- ⊗ More self-sufficiency with a lithium-ion battery



Skyroof (optional).  
Great view.



The big Dexters have a lot to offer.  
Here's just a tiny excerpt from the  
Dexter 625.



## MODELS WITH LIFT BED







# UP AND AWAY.

**Sometimes it really doesn't take much to be happy.  
A weekend holiday and a cosy spot, for example.**

Okay, a little sun would be nice too. And a fresh breeze, if it can be arranged. Oh, and most importantly, silence. But otherwise please don't bother. Anything else would just serve as a distraction from what matters. From the salty sea air, the gentle rocking of the waves and the ships passing slowly on the horizon.

This is the perfect place to enjoy the harmony of the moment. And to think about where you want to spend a nice day tomorrow. But first, you can look forward to the night — the perfect sleeping place is waiting. A lift bed with a wonderful motorhome around it.



## MODELS WITH LIFT BED



The interior.  
Luxury fills the space.



# FOR THE VERY WELL RESTED.

Heavenly, like a lift bed. It takes up space only when you really need it.

The rest of the time, you have more storage space or more free space – as you like. And this is how our Dexter models are equipped otherwise as well: highly customised. The compact **Dexter 550** leaves nothing to be desired with its naturally beautiful furniture with solid wood elements, while offering an unbelievable amount of comfort. Is it bigger on the inside than on the outside? If you take a look at the spacious four-seat group with a sofa bed, the large corner kitchen and the convenient bathroom, you could almost think it's true. Especially as the other features are very extensive.

The **Dexter 550** is a little space miracle and this is mainly due to the retractable lift bed, which makes your Dexter virtually two-storey. You can therefore relax upstairs, while someone else reads a book in the comfortable seating group below. Or maybe a travel guide?

## Special highlights:

- ⊗ Only 5.42 m long
- ⊗ Electronically controlled lift bed
- ⊗ Fully insulated GRP rooftop
- ⊗ Spacious corner kitchen
- ⊗ Large rear washroom
- ⊗ Practical sofa bed

Enjoy your freedom along the way? Here you go.



Space to the power of two.  
Weren't there just seats here?



## ADVANTAGES AT A GLANCE

# THE KARMANN-MOBIL ADVANTAGES.

As an absolute exception, you have no choice in this regard. Because no matter which model or which options you decide on, versatility and practicality in comfortable and high-quality furnishings are always included in Karmann-Mobil's strengths.



Single bed, double bed, bunk bed or storage? It is entirely up to you.



## MODULARITY AND VARIABILITY.



At Karmann-Mobil you will find a selection that leaves nothing to be desired. We offer the right motorhomes for all types of camping and countless opportunities to equip and furnish them fully individually

Features such as the swivelling washbasin and toilette module show how to make the best use of space. Double!







Kitchenette, refrigerator, pantry, closet – at times head-high, at times compact, always spacious. Experience the diversity.



## INDIVIDUALITY.

With different vehicles, a wide variety of sizes and lengths as well as various kitchen and bathroom variations, we offer the right thing for every taste and need. Even the beds adapt to individual needs. In some Davis and Dexter models, single beds can be transformed into a double bed or relaxation area in no time. Elsewhere, sinks can be folded away to save space.



## VERSATILITY.



With our motorhomes, you can do much more than just travel. They are also perfect for moving home or for big shopping trips – and all the aspects of everyday life.



## ADVANTAGES AT A GLANCE



### COMFORT.

We wish you a pleasant journey and make sure you have one. With an interior that offers a multitude of amenities as standard. More than one would expect on the road. You just have to look at the spacious comfort bathroom. Or the generously sized double beds.



*When camping, the journey is the reward.  
Enjoy every kilometre.*



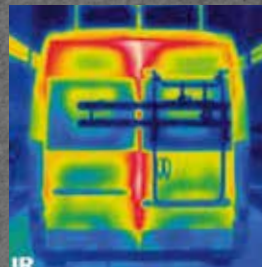
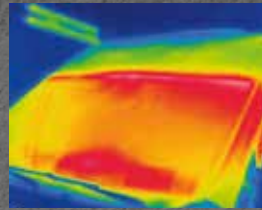
### DESIGN.



Our motorhomes are exceptionally stylish and modern – our contribution to truly wonderful vacation. This claim is implemented brilliantly in every detail – as can be seen in the top cabinet doors with indirect LED lighting.



Winter can come –  
our motorhomes are  
perfectly insulated.



## ALL-WEATHER.

All our vehicles are suitable for winter use. High-performance heaters, excellent insulation and perfectly insulated tanks, as well as full sealing ensure that our motorhomes are fun yearround. Even in the winter.



## QUALITY.

Karmann-Mobil stands for durable and reliable motorhomes. This is ensured by selected quality in materials and workmanship. We are convinced of this and that's why we offer a 5-year guarantee against leaks, for example.







All information provided in this brochure refers to the products listed here and does not apply to other products provided by Eura Mobil GmbH. The models pictured in this brochure show the furnishings for the German market. In some cases, they also include special equipment and accessories not included in the standard scope of delivery. All weights are values with a variation of +/- 5 percent. Deviations from the model variants and equipment described here could be possible due to legal regulations in different countries. Please consult your Karmann-Mobil dealer pertaining to the exact scope and the available program of model-specific as well as model-independent equipment. Subject to errors and changes of construction, equipment and special equipment. All previous catalogues lose their validity with publication of this brochure.

© Eura Mobil GmbH 2021 / Reprinting, even in part, requires the express written permission of Eura Mobil GmbH.

As of: August 2021

**CATALOGUE**  
2021|2022

KARMANN-Mobil · Eura Mobil GmbH  
Kreuznacher Straße 78 · 55576 Sprendlingen  
T +49 6701 203 800 · F +49 6701 203 809  
[www.karmann-mobil.de](http://www.karmann-mobil.de)

**KARMANN**  
*Mobil*